



COMMUNITY  
FOUNDATION  
SONOMA  
COUNTY

## Sonoma County & COVID-19



Welcome

COVID-19: Nonprofit &  
Community Needs

Our Response

Q & A

# Impact on Nonprofits

- Increase in Request for Services
- Reduced Capacity
- Shift in Operations
- Cancelled Fundraisers
- Ongoing Uncertainty

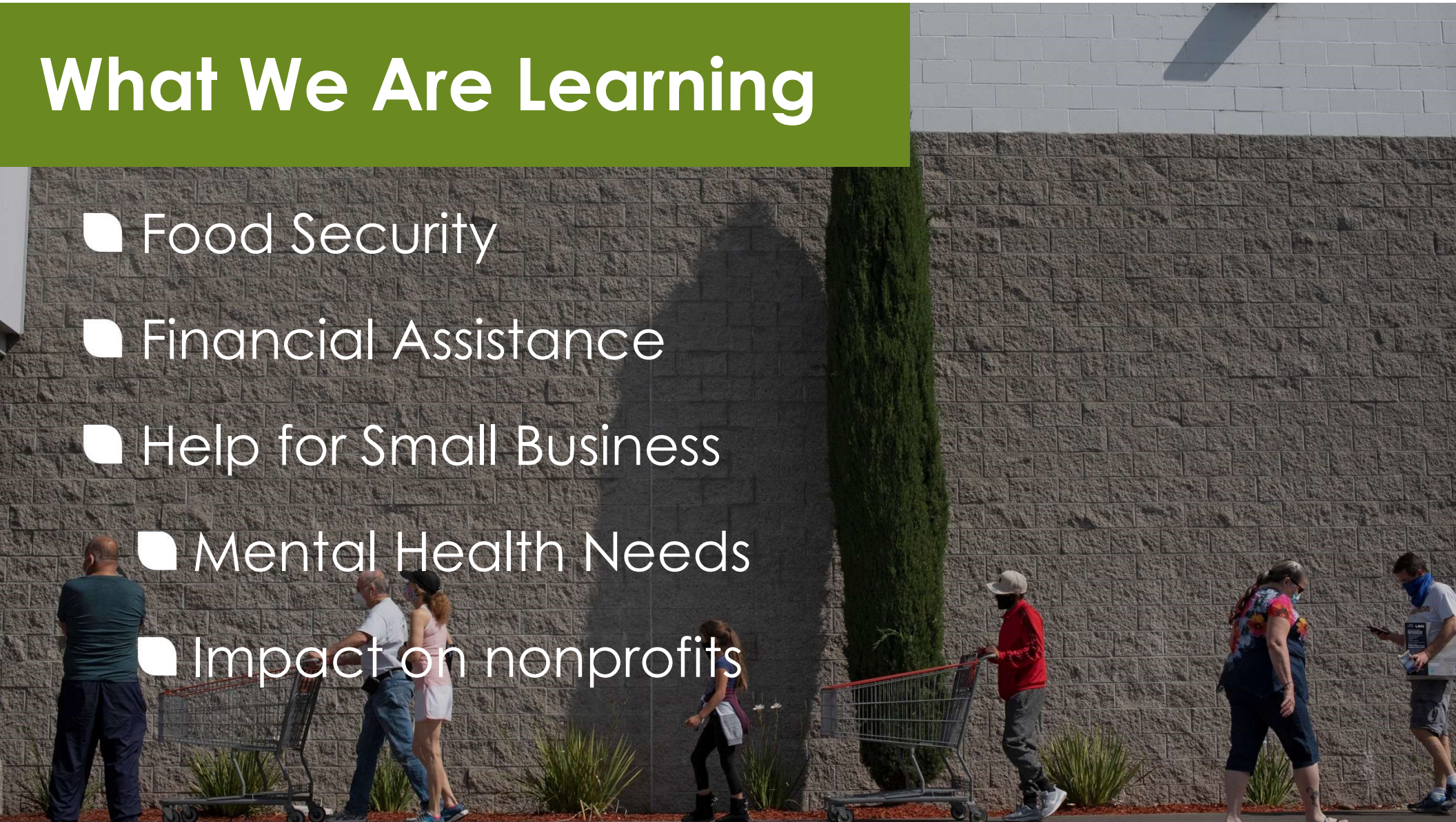






# What We Are Learning

- Food Security
- Financial Assistance
- Help for Small Business
- Mental Health Needs
- Impact on nonprofits



# Food Security

- 50 – 200% increase in demand at food pantries countywide
- Service gaps in coastal and rural areas
- People experiencing homelessness and seniors are especially vulnerable
- Food insecurity among children





**Food Security**

# Financial Assistance

- Rental Assistance
- Utility Bills
- Food Insecurity
- 36,000 filed for unemployment in Sonoma County in April. 29,200 are still out of work.





**Financial Assistance**

# Small Businesses

- Small businesses (20 employees or less) are 87% of Sonoma County's businesses
- Particularly susceptible to downturns
- Added strain from multiple disasters



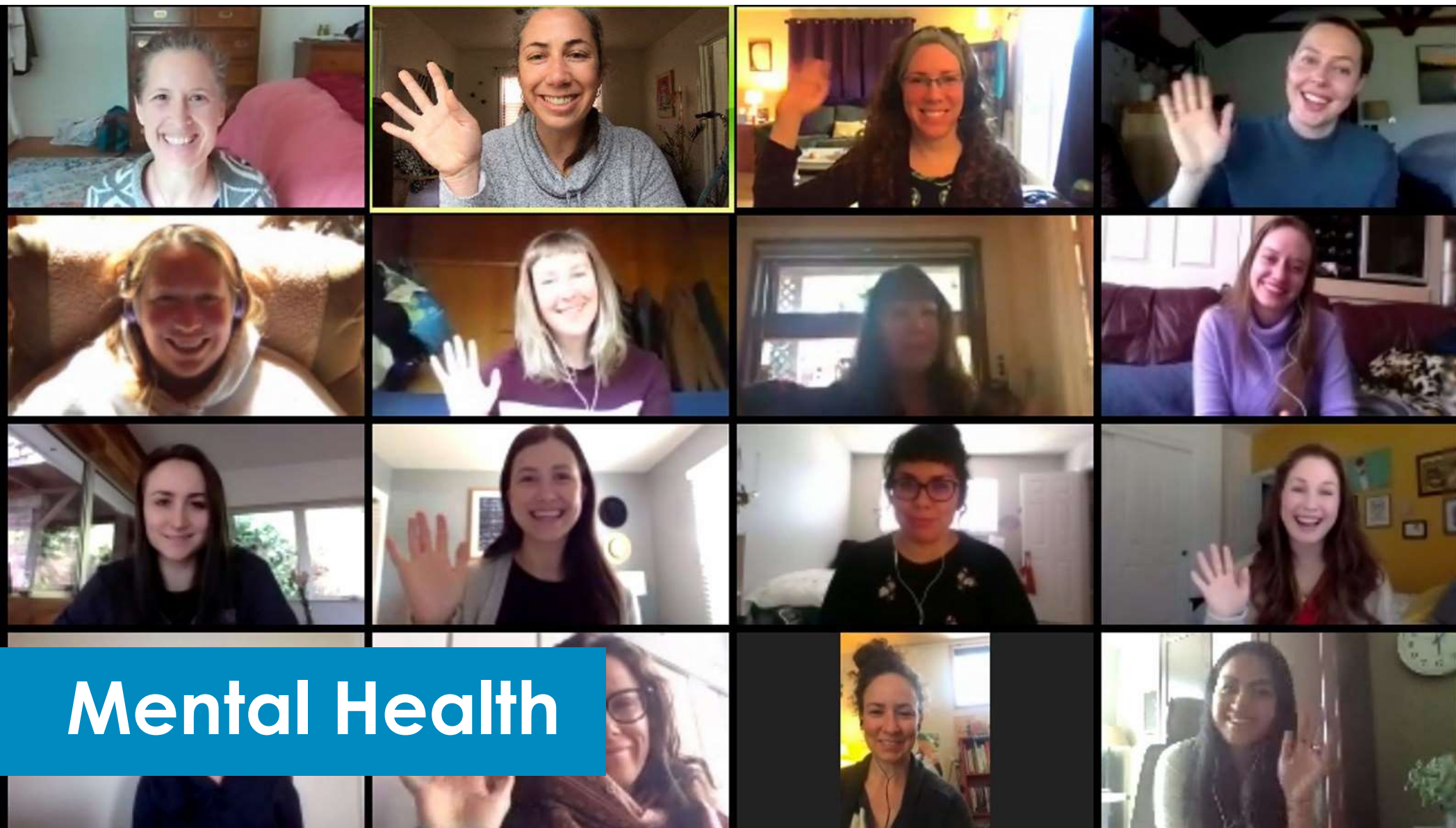


# Small Businesses

# Mental Health

- Stress from continuous disasters
- Long-lasting effects of trauma
- Vulnerable populations
  - Children
  - Domestic Violence
  - Undocumented Individuals
  - Isolated Seniors





**Mental Health**

# The Childcare Crisis

- Nearly half of Sonoma County's 616 day care providers are still closed
- Sonoma County already suffered from shortage of child care providers
- Costs to operate have increased while capacity has been limited





# Childcare Crisis





# Our Response



# Our Grants

## Starting with equity

Addressing the disproportionate impacts on the Latinx community

## Grants to date

Over \$3.8 million since mid-March

Given by CFSC fund holders and Community Impact Team

## Key initiatives

Latinx Health Task Force

COVID-19 Competitive Grants Program

# Beyond Grants

**WEBINAR EVENTS:**  
**DONOR UPDATES**  
ON COMMUNITY NEEDS



*Virtual Coffee  
with CFSC*







**Thank you**